



LOCAL EXPERTS.
INDUSTRIAL STRENGTH.

FOR SALE OR LEASE

Metal Manufacturing Bldg. w/ Yard & Cranes

3755 South Lipan Street
Englewood, CO 80110



PROPERTY FEATURES:

Gross Building Size:	34,652
Office Area:	3,000 SF
Land Size:	1.74 AC (full city block)
Zoning:	I-1 - Englewood
Bridge Crane:	(2) 3-ton, (3) 5-ton
Clearance:	16'-20'
Power:	Heavy

Yard:	Fenced
Heat:	Radiant/gas
Loading:	(9) drive-in doors
City/County:	Englewood/Arapahoe
NNN:	\$2.87/SF

SALE PRICE: \$5,000,000 or \$144/SF

LEASE RATE: \$11.25/SF

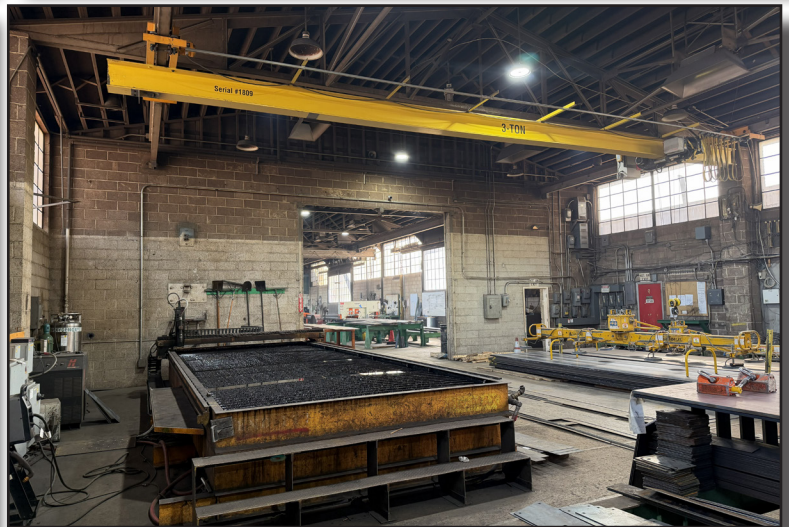
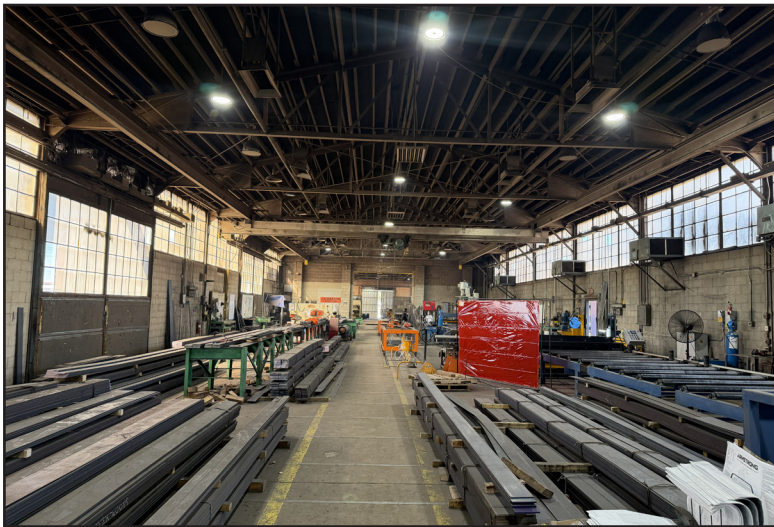
This 34,652 square foot manufacturing facility is located in the highly sought after southwest industrial market. This clear-span property sits on a 1.74 AC city block and has large oversized loading doors, heavy power, multiple bridge cranes, and a large fenced yard.



© 2026 Ringsby Realty Corp. All rights reserved. This information has been obtained from sources believed reliable, but has not been verified for accuracy or completeness. You should conduct a careful, independent investigation of the property and verify all information. Any reliance on this information is solely at your own risk. Ringsby Realty Corp. and the Ringsby Realty Corp. logo are service marks of Ringsby Realty Corp. All other marks displayed on this document are the property of their respective owners, and the use of such logos does not imply any affiliation with or endorsement of Ringsby Realty Corp. Photos herein are the property of their respective owners. Use of these images without the express written consent of the owner is prohibited.



 **VIEW DRONE VIDEO**





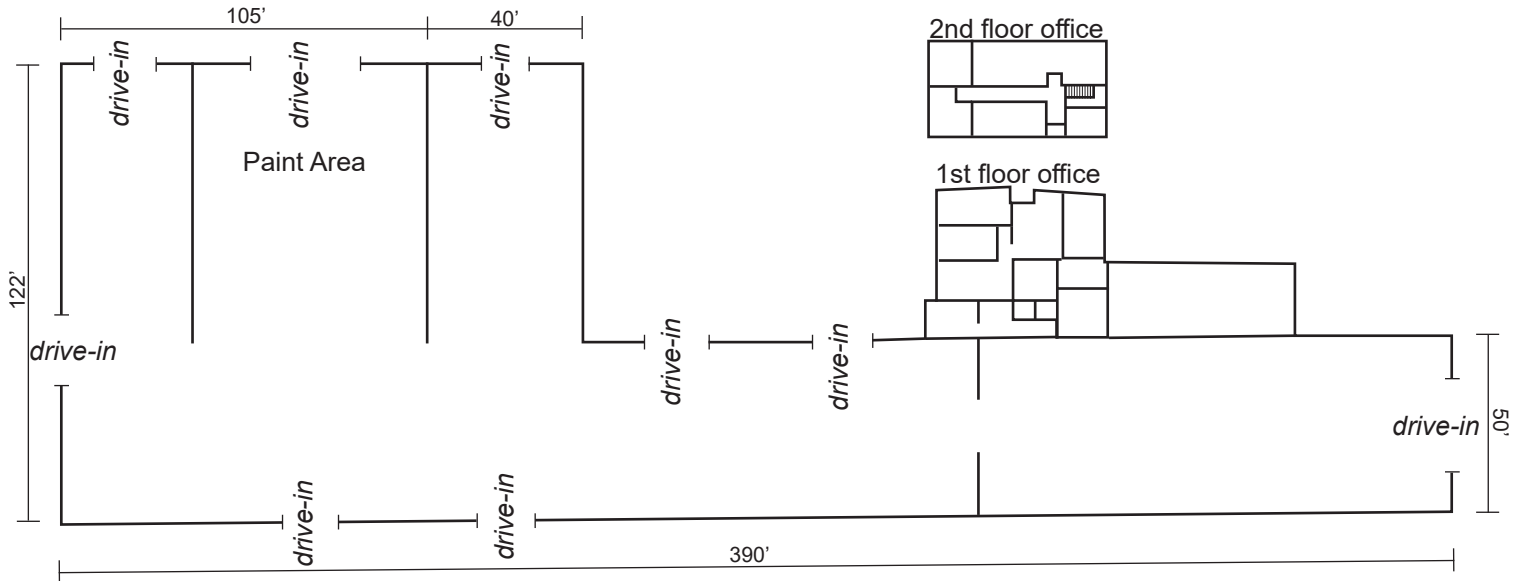
**LOCAL EXPERTS.
INDUSTRIAL STRENGTH.**

FOR SALE OR LEASE

Metal Manufacturing Bldg. w/ Yard & Cranes

3755 South Lipan Street
Englewood, CO 80110

BUILDING LAYOUT



LOCAL EXPERTS. INDUSTRIAL STRENGTH.

1801 W. Colfax Ave.
Denver, CO 80204
www.ringsbyrealty.com

Scott Patterson
scott@ringsbyrealty.com
(303) 892-0121