



- GREAT RETAIL LOCATION
- WADSWORTH LOCATION WITH GREAT VISIBILITY
- CAR SERVICE CENTER

- **TRAFFIC COUNT – 46,600 CARS PER DAY!**
- NEWER CONSTRUCTION
- CORPORATE IMAGE OFFICE

**5057 South Wadsworth Way
Littleton, Colorado 80123**

Building Size	20,600 SF
Lot Size	4.81 Acres
YOC	2005
Zoning	B1 General Business District
Taxes (2010)	\$64,347
Lease Rate	\$30,000/Month NNN
Sale Price	TBD



For Information Contact:

Scott Patterson
scott@ringsbyrealty.com
 (303) 892-0121

RINGSBY REALTY CORPORATION
 1123 Auraria Parkway | Suite 200 | Denver, CO 80204
www.ringsbyrealty.com

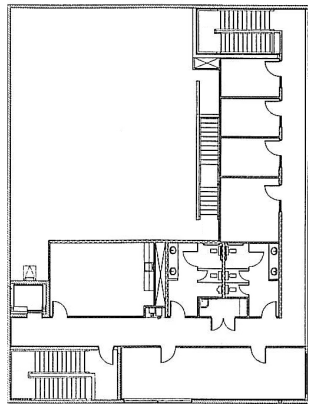
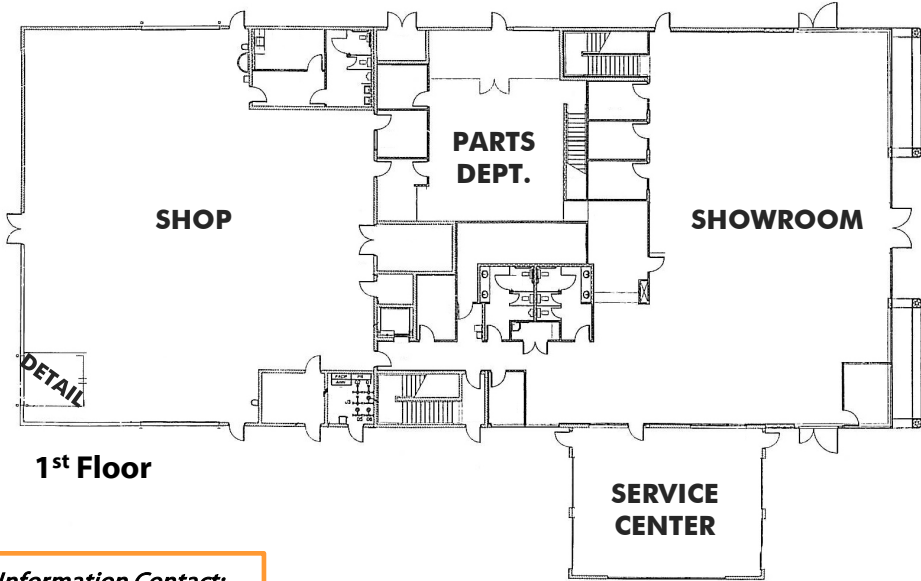
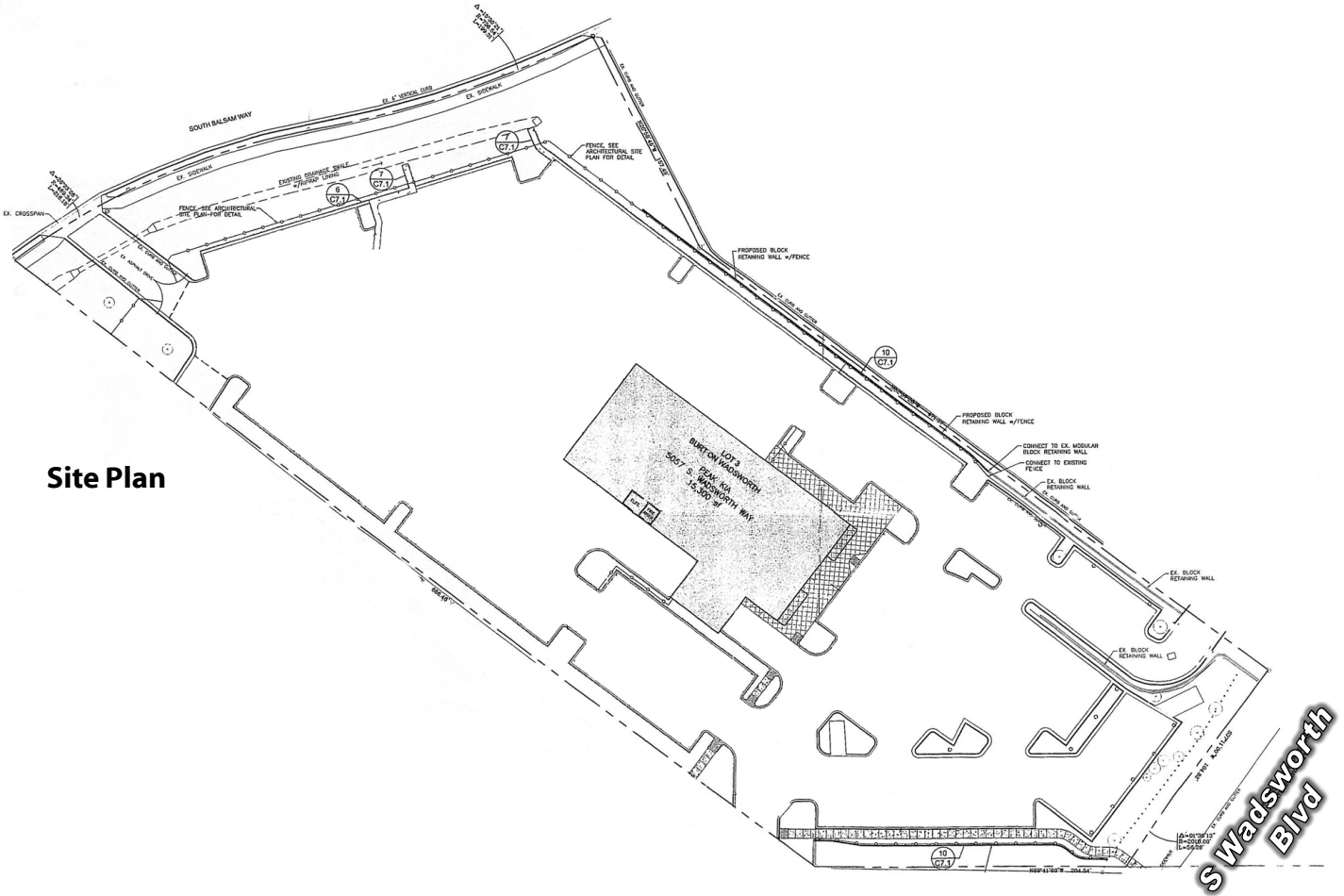


FOR SALE / LEASE

AUTO DEALERSHIP/SERVICE/SHOWROOM

5057 South Wadsworth Way, Littleton, CO 80123

Site Plan



For Information Contact:

Scott Patterson
scott@ringsbyrealty.com
(303) 892-0121

RINGSBY REALTY CORPORATION
1123 Auraria Parkway | Suite 200 | Denver, CO 80204
www.ringsbyrealty.com



No warranty or representation, express or implied, is made as to the accuracy of the information contained herein, and same is submitted subject to errors, omissions, change of price, rental or other conditions, withdrawal without notice, and to any special listing conditions, imposed by our principals.